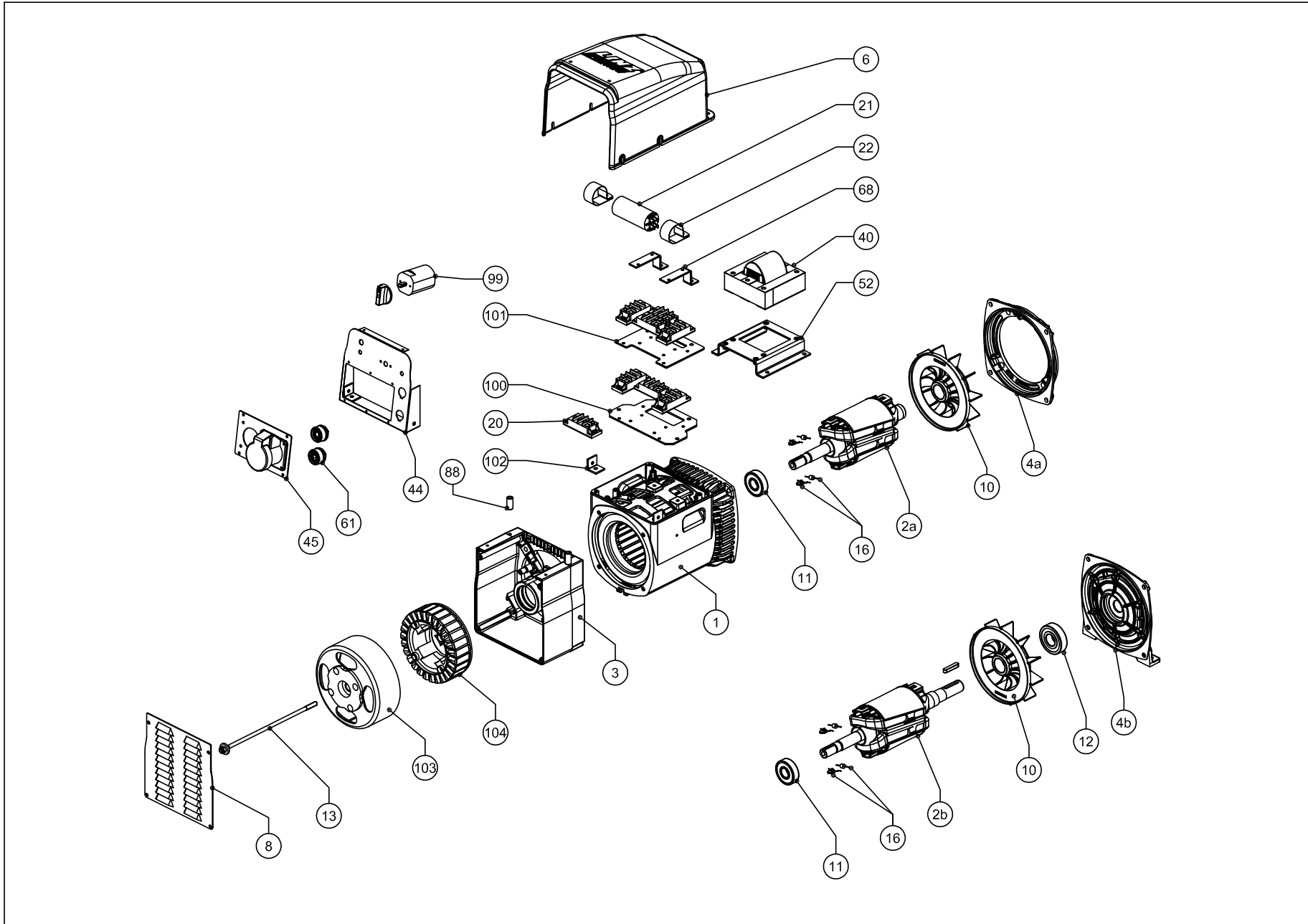


HFW10 MB



no.	CODICE CODE	DESCRIZIONE	DESCRIPTION	DESCRIPTION	DESCRIPTION	€
1	*	CARCASSA CON STATORE HFW10 MB	FRAME WITH STATOR HFW10 MB	CARCAZA CON ESTATOR HFW10 MB	CARCASSE AVEC STATOR HFW10 MB	212,0
2	*	ROTORE FINITO HFW10 MB J609b	ROTATING INDUCTOR HFW10 MB J609B	IND. ROTANTE HFW10 MB J609B	RUE POL. HFW10 MB J609B	163,0
2	*	ROTORE FINITO HFW10 MB B14	ROTATING INDUCTOR HFW10 MB B14	IND. ROTANTE HFW10 MB B14	RUE POL. HFW10 MB B14	176,0
3	E10SE009C	SCUDO POSTERIORE B3/B9	B3/B9 REAR SHIELD	ESCUDO POSTERIOR B3/B9	FLASQUE ARRIERE B3/B9	22,0
4a	E10SB003B	SCUDO ANTERIORE d.105 C23-C30	d.105 C.23 - C30 FRONT SHIELD	ESCUDO ANTERIOR d.105 C.23 - C30	FLASQUE AVANT d.105 C.23-C30	9,1
4a	E10SB005B	SCUDO ANTERIORE d.146 J609b	d.146 J609B FRONT SHIELD	ESCUDO ANTERIOR d.146 J609B	FLASQUE AVANT d.146 J609B	8,4
4a	E10SB009B	SCUDO ANTERIORE d.41.25 J609a	d.41.25 J609A FRONT SHIELD	ESCUDO ANTERIOR d.41.25 J609A	FLASQUE AVANT d.41.25 J609A	12,3
4b	E10SB001B	SCUDO ANTERIORE B3/B14	B3/B14 FRONT SHIELD	ESCUDO ANTERIOR B3/B14	FLASQUE AVANT B3/B14	18,0
6	E10BT126D	SCATOLA Basetta	TOP COVER	TAPA SUPERIOR	COUVERCLE SUPERIEUR	9,6
8	E10KA143B	PROTEZIONE POSTERIORE	REAR PROTECTION	PROTECCION POSTERIOR	COFFRET ARRIERE HAUT	19,0
10	E10VE000B	VENTOLA	FAN	VENTILADOR	VENTILATEUR	4,1
11	EX411465320	CUSCINETTO POSTERIORE	REAR BEARING	COJINETE POSTERIOR	ROULEMENT ARRIERE	4,7
12	EX411465325	CUSCINETTO ANTERIORE	FRONT BEARING	COJINETE ANTERIOR	ROULEMENT AVANT	8,5
13	E10TK021A	TIRANTE CENTRALE + DADO + RONDELLA	TIE ROD + NUT + WHASER	VARILLA CENTRAL + ARENDELA + TUERCA	TIRANT CENTRAL + RONDELLE + TIGE	3,6
16	EX541201006C	DIODO P600S+VARISTORE CABLATI	DIODE AND VARISTOR	DIODO Y VARISTOR	DIODE AVEC VARISTANCE	2,8
20	EX541320000	PONTE A DIODI TRIFASE	THREEPHASE DIODE BRIDGE	PUENTE DIODO TRIFASICO	PONT REDRESSEUR TRIPHASE	28,8
21	EX541500030	CONDENSATORE	CAPACITOR	CONDENSADOR	CONDENSATEUR	5,5
22	E10KA022A	FASCETTA CONDENSATORE	CAPACITOR CLAMP	ANILLA CONDENSADOR	COLLIER CONDENSATEUR	0,5
40	E10KA158B	INDUTTANZA SALDATRICE	INDUCTANCE	INDUCTOR	INDUCTANCE	86,0
44	E10BT124CS5	PANNELLO CONTROLLO	CONTROL PANEL	PANEL DE CONTROL	TABLEAU DE CONTROLE	30,4
45	E10BT153A	PANNELLO PRESE	SOCKETS PANEL	PANEL DE TOMAS	TABLEAU PRISES	9,0
52	E10BT122B	PIASTRA COMPOUND	COMPOUND SUPPORT	SOPORTE COMPOUND	PLAQUE COMPOUND	22,0
61	EYPRSDIN60229RD	PRESA DINSE	FEMALE WELDING TERMINAL	BORNE HEMBRA DE SOLDADURA	PRISE DINSE	4,0
68	E10KA144A	SUPPORTO	SUPPORT	SOPORTE	SUPPORT	7,0
88	E00ZF327A	DISTANZIALE CILINDRICO	SPACER	ARANDELA DE SEPARACION	RONDELLE D'EPaisseur	1,6
99	EX592201000	COMMUTATORE 7 POSIZIONI	7 POS. SWITCH	CONMUTADOR 7 POS.	COMMUTEUR 7 POS.	18,0
100	E10BT121B	PIASTRA INFERIORE DIODI	BOTTOM PLATE DIODES	PLACA INFERIOR DIODOS	PLAQUE INFERIOR DIODE	46,0
101	E10BT142A	PIASTRA SUPERIORE DIODI	UPPER PLATE DIODES	PLACA SUPERIOR DIODOS	PALQUE SUPERIOR DIODE	36,0
102	E10BT125A	STAFFA ANGOLARE	BRACKET	SOPORTE	SUPPORT	3,4
103	E10KA153A	ROTORE MAGNETI PERMANENTI	ROTOR PMG	ROTOR PMG	ROTOR PMG	166,0
104	E10KA160B	STATORE SALDATRICE	WELDING STATOR	ESTATOR DE SOLDADORA	STATOR DE SOUDEUSE	396,0

\* Specificare codice dell'alternatore e data di produzione

\* Specify alternator's code and date of production

\* Precisar codigo del alternador y fecha de production

\* Specifier code alternateur et date de production

